



IMPACT OF CRISES ON MIGRANT CHILDREN

Whether separated or accompanied, children constitute a particularly vulnerable group among migrants. Their situation is further compounded in times of emergencies.

Project funded by the European Union



Project implemented by ICMPD



INCREASED VULNERABILITIES

POVERTY

Destitution and family breakdown; Danger, detention, deprivation and discrimination



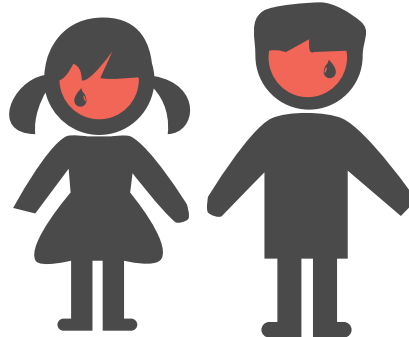
CHILD INTEGRITY VIOLATIONS

Failure to appropriate child-friendly assessment, i.e. assessment conducted in a scientific, safe, child and gender sensitive and fair manner, avoiding any risk of violation of the physical integrity of the child



ADDICTIONS

Rise in addiction to alcohol and tobacco, and the abuse of narcotic drugs, psychotropic substances and inhalants



SCHOOL DROPOUT

Drop-out of school especially for girls and children from low income families



HIV/AIDS INFECTIONS

Increase of HIV/AIDS infections, malaria, tuberculosis and other infectious and contagious diseases



EARNINGS LOSS

Loss of assets and earnings



NUTRITION DEFICIT

Deprivation of nutrition, water and sanitation facilities, access to basic healthcare services, and shelter

VIOLENCE AND ABUSES

CHILD LABOR

Increase of child labor, interferes with the child's education; harms children's physical, mental, moral, spiritual, social development



RACISM

Increased exposure to racism, discrimination xenophobia and related intolerance

VIOLENCE

Expansion of all forms of violence, abuse and neglect



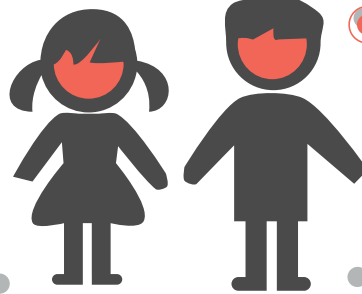
DETENTION

Arbitrary detention and extrajudicial or summary executions, torture, including physical, mental, psychological, sexual and domestic violence, or gang related violence and harmful traditional practices in all settings



TRAFFICKING

Trafficking and smuggling subjects migrant children to harm, servitude or exploitation, which may include illegal adoption, sale of children and their organs, pedophilia, child prostitution, child pornography, child sex tourism, debt bondage, and slavery



SEXUAL DISCRIMINATION

Violence and discrimination against girls, including female infanticide, prenatal sex selection, rape, sexual abuse, harmful traditional or customary practices, such as female genital mutilation, marriage without the free and full consent of the intending spouses, early marriage, forced sterilization and unintended pregnancy



ABDUCTION

Abduction, forced recruitment and use of migrant children in armed conflicts



HARMFUL CONSEQUENCES OF LEGAL ACTIONS ON MIGRANT CHILDREN

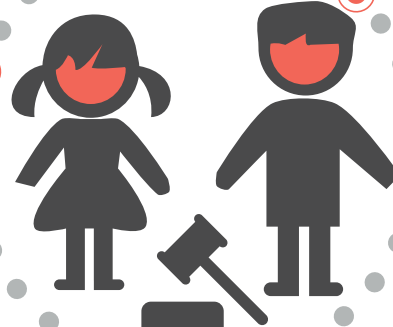
CUSTODY

Use of custodial sentencing as a response to children in conflict



ILLEGAL ENTRY

Criminalisation for solely reasons of illegal entry or presence in the country



IDENTIFICATION ISSUES

Disruption of or lack of access to proper and appropriate identification, registration, age assessment, documentation, family tracing, guardianship systems or legal advice